

Corporate Plan 2025-2028

Trust Board

27 August 2025



Background

- Following publication of the Programme for Government and the Minister's 3 year plan, the Trust undertook a period of development for a new Corporate Plan
- Three year Corporate Plan to cover current Executive period, plus an extra year to allow for the publication of a new Programme for Government
- Development process has included engagement with various stakeholders including staff and service users

Our Vision

The South Eastern Trust will be a great place to live, a great place to work and a great place for care and support.

What does success look like?

A great place to live

People feel empowered and supported to look after their own health and wellbeing, live meaningful lives and stay well for as long as possible in their homes and communities.

A great place to work

A culture where people join us, stay with us, flourish, feel supported, are proud to work at our Trust, and continually give their best.

A great place for care and support

Every person has equal and timely access to safe and high quality care and support when they need it, as close to home as possible, to achieve the best health outcomes.

Strategic Context

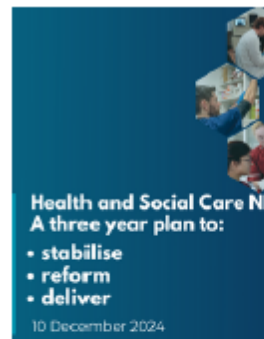
- The Trust's priorities as outlined in the Corporate Plan have been aligned to key strategic documents including;

- Programme for Government priorities
- The Minister's 3 year Plan
- HSC NI Reset Plan



The Programme for Government (PfG) 2024 - 2027 ('Our plan, doing what matters most')

The Programme for Government outlines key priorities for health including cutting health waiting times, better support for children and young people with Special Educational Needs and the Reform and Transformation of services.



Department of Health's 'Health and Social Care NI - A Three Year Plan to: Stabilise, Reform, Deliver' (December 2024)

The Department's Plan sets out a range of actions to address the challenges facing the health and social care system under three main domains: stabilisation, reform and delivery.



Department of Health's Health and Social Care NI Reset Plan

This plan sets out how we will achieve the two fundamental goals of delivering the Minister's strategic vision for Health and Social Care and meeting the Programme for Government priority of reducing waiting lists within the available resources.

Strategic Context



Prioritise the **stabilisation** of our existing system and critical services within the system through a focus on financial, workforce and system stability



Focus on **reform** and transformation in order to deliver long-term improvement and increase capacity to better meet the needs of our citizens



Focus on **delivery**, ensuring the overall system operates as effectively and efficiently as it can and recognising the role individuals and teams can play as part of optimising service delivery

Our Priorities

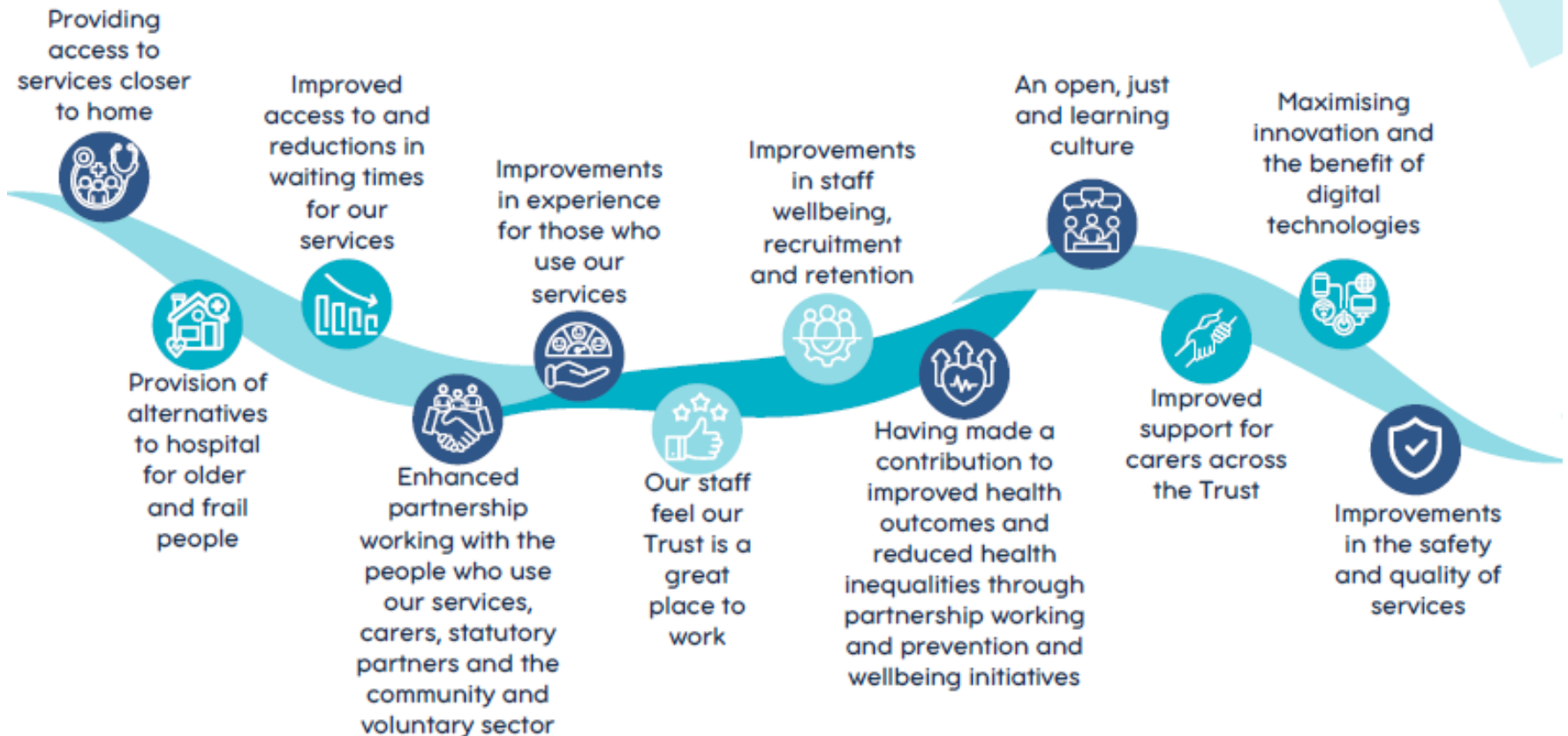


How we are measuring success

- Annual Directorate and Service Level plans document the specific actions required to deliver our plan
- Progress will be monitored through existing accountability arrangements, governance and performance management processes
- Outcomes will also be monitored through the Department of Health's new planning approach as part of the new Integrated Care System



Measures of success



Our Plan - A Summary

VISION

The South Eastern Trust will be a great place to live, a great place to work and a great place for care and support



PRIORITIES



Population Health and Health Inequalities



Delivering Care Closer to Home



Hospital Care



Safety



Quality and Experience of Care



Our People

ENABLERS



Working Together



Innovation



Environment



Funding

VALUES



Working Together



Excellence



Compassion



Openness & honesty