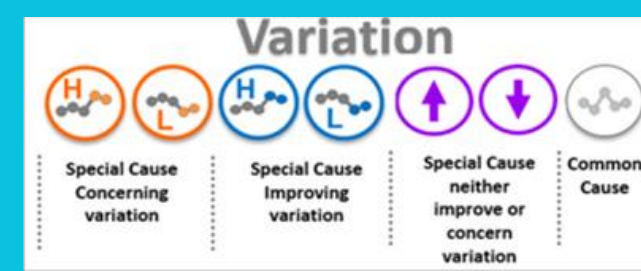






Statutory Functions (Children's)

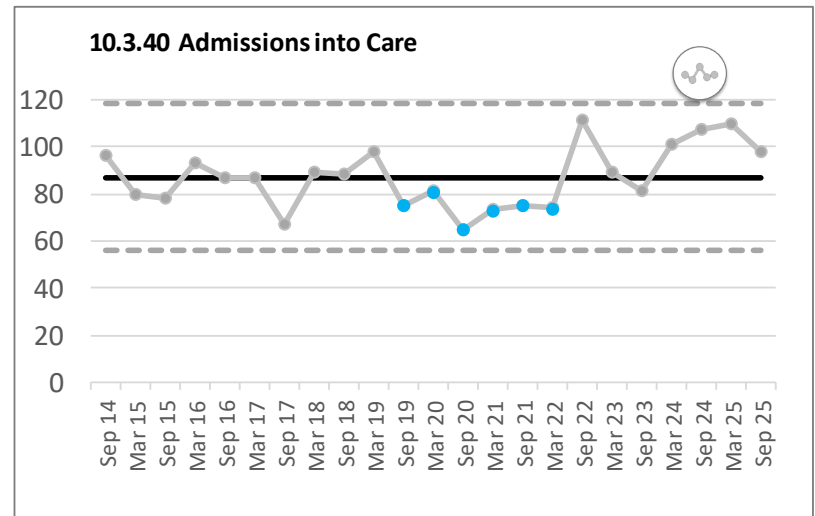
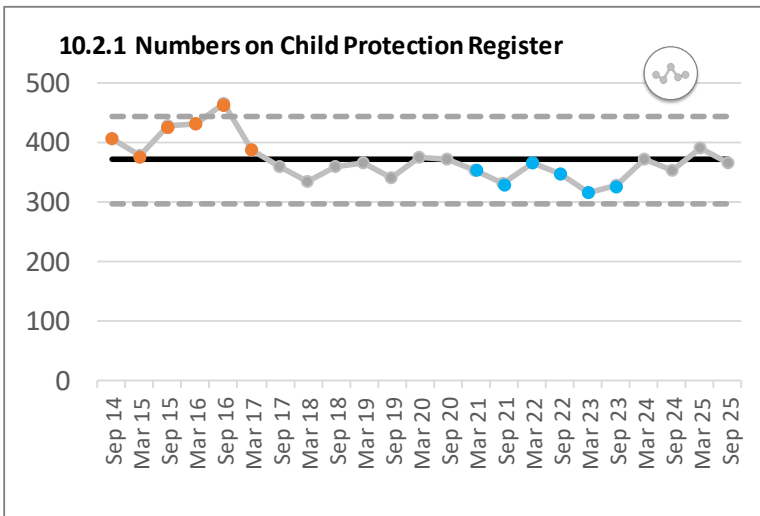
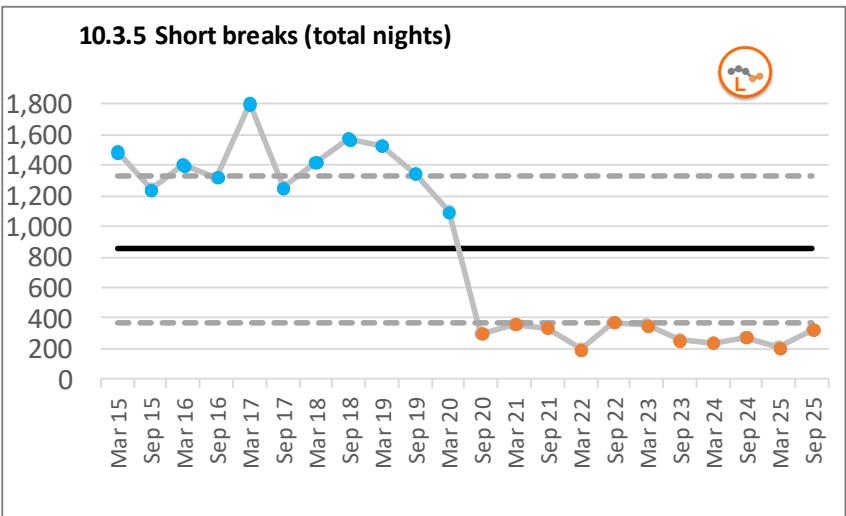
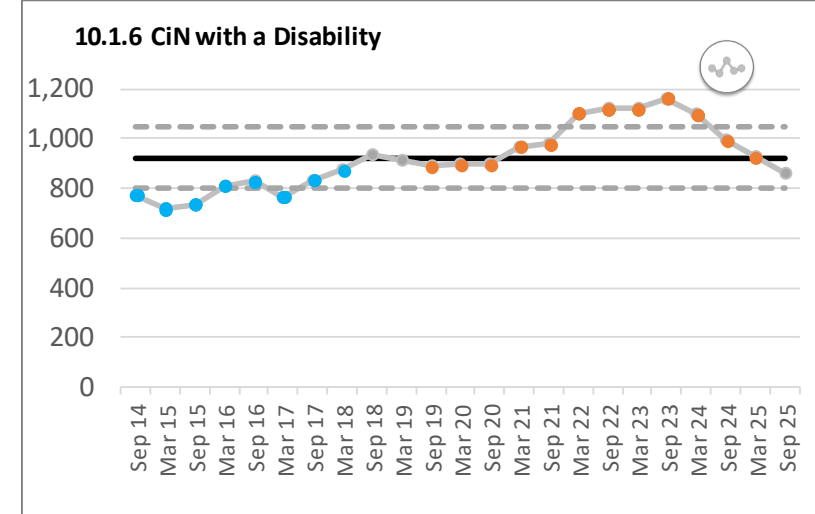
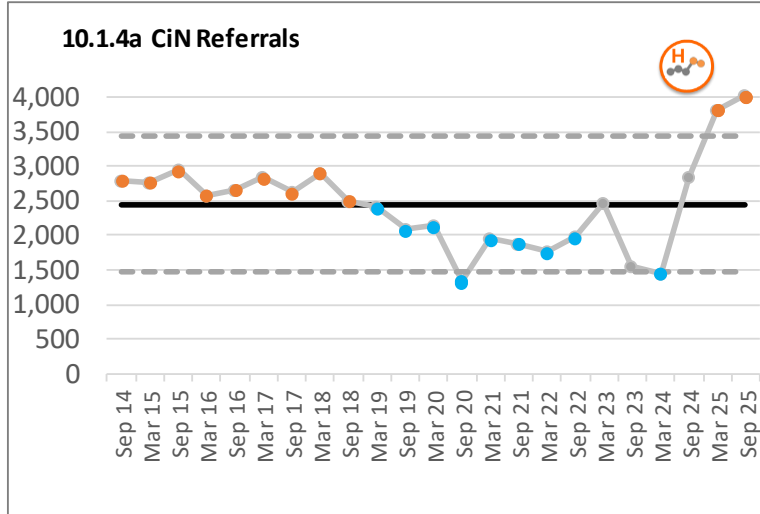
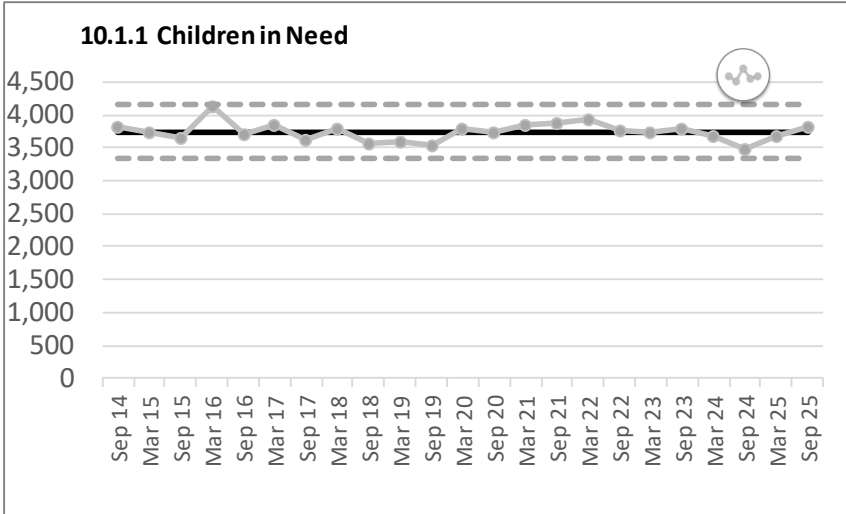
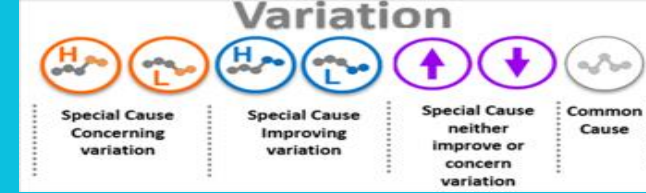
Figures reported at 30th September 2025



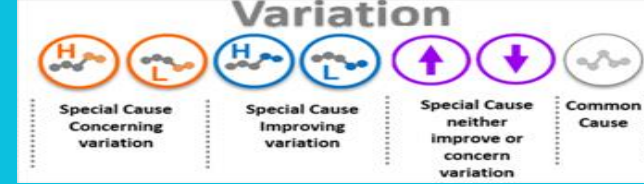
The Trust reports to the SPPG twice annually through the Corporate Parenting Report. This report provides an overarching assurance framework for the delivery of Statutory Social Care functions in relation to Corporate Parenting.

Data set	Number	Key issues where variation in data is showing cause for concern
10.1.3 CiN Referrals 	4020	The Trust continues to work on the corrective action plan in place to increase the timely input of referral onto the SOS CARE system. The service is on track to complete the corrective work by January 2026.
10.3.5 Short Breaks (total nights) 	326	Planned opening of a new facility for children with disability (Redwood) will increase the Trust's ability to increase short break in the next reporting period.
10.3.3 LAC Placement 	784	There is a continued upward trajectory in the number of children looked after by the Trust. The data highlights a growing reliance on residential care (56) unregulated kinship placements (157) and with independent fostering providers (127) which are areas of concern.
10.4.1 Leaving Care Population 	367	The Leaving Care population continues to grow alongside the children looked after and unaccompanied asylum-seeking children.

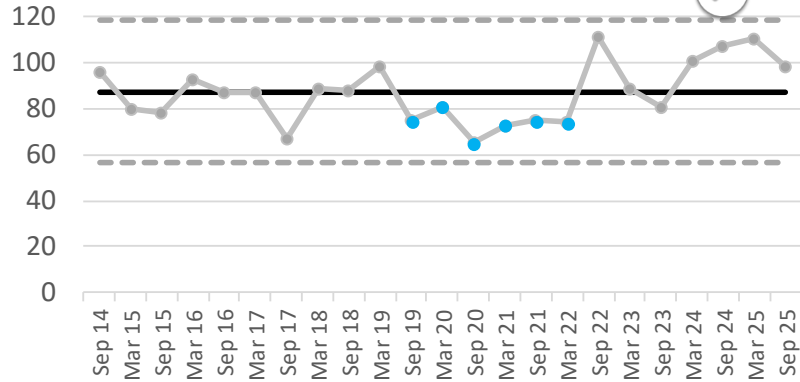
Statutory Functions Data Tables



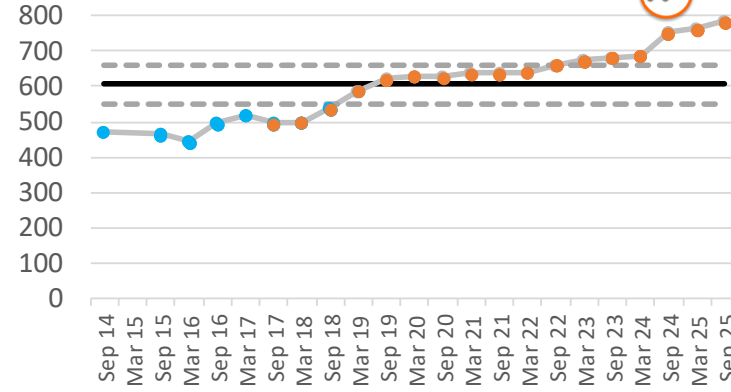
Statutory Functions Data Tables



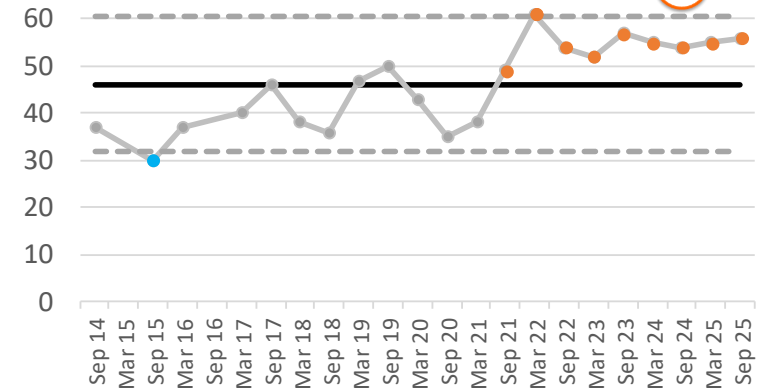
10.3.40 Admissions into Care



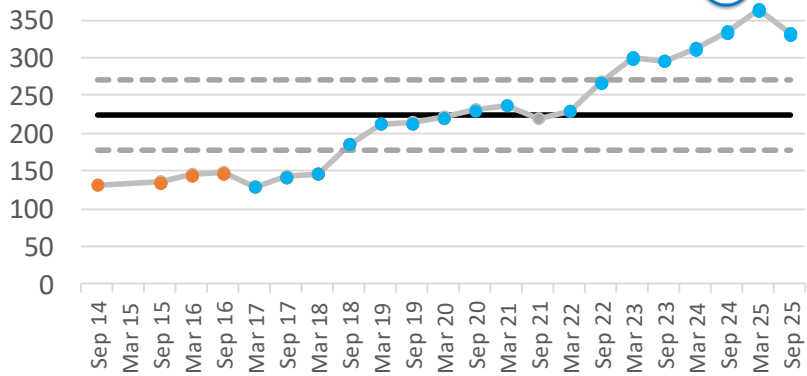
10.3.3. LAC Placement Total



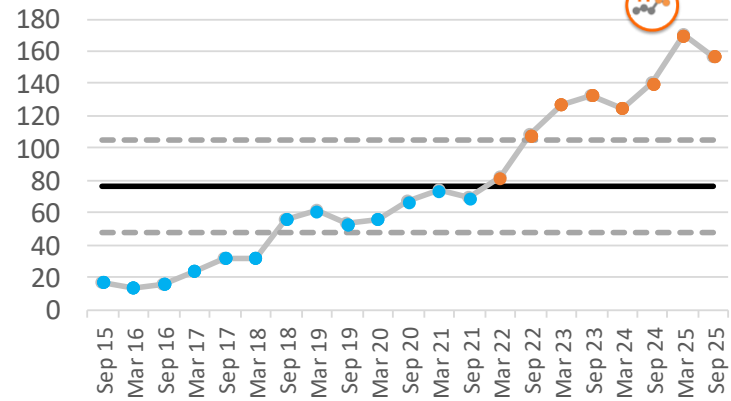
10.3.3 LAC Residential Placement



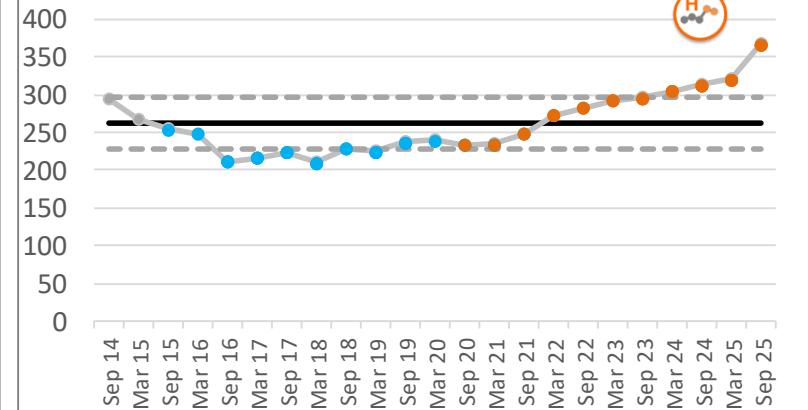
10.3.3 LAC Kinship Placement



10.3.3 LAC Unregulated Placement



10.4.1 Leaving Care Population



SPPG Monitoring

Issues reported at 30th September 2025

The social work leads maintain regular communication with the SPPG, ensuring that there is a shared understanding of progress and expectations. They are actively working through all areas of concern identified in the Support and Intervention Framework (SIF) and SF Action Plan, with actions in place, ongoing monitoring and a commitment to delivering sustained improvements.

Issue identified	Reporting to SPPG
Delayed discharge of patient from Iveagh inpatient facility	SIF Level 3
Level of unallocated within Children's Disability	SIF Level 2
Inability to provide short breaks for children with disabilities	SIF Level 2
Lakewood bed capacity	SIF Level 2
Gateway referrals	SIF Level 2
Increasing usage of Independent Sector foster placements	SIF Level 1
Insufficient placement provision for children in care	SF Action Plan
High social work vacancies across Children's Services	SF Action Plan
Lack of availability of adoptive placements	SF Action Plan