



Health and
Social Care



Department of
Health

An Roinn Sláinte

Mánnystrie O Poustie

www.health-ni.gov.uk

ELECTIVE CARE FRAMEWORK

PROGRAMME FOR GOVERNMENT UPDATE

NOVEMBER 2025

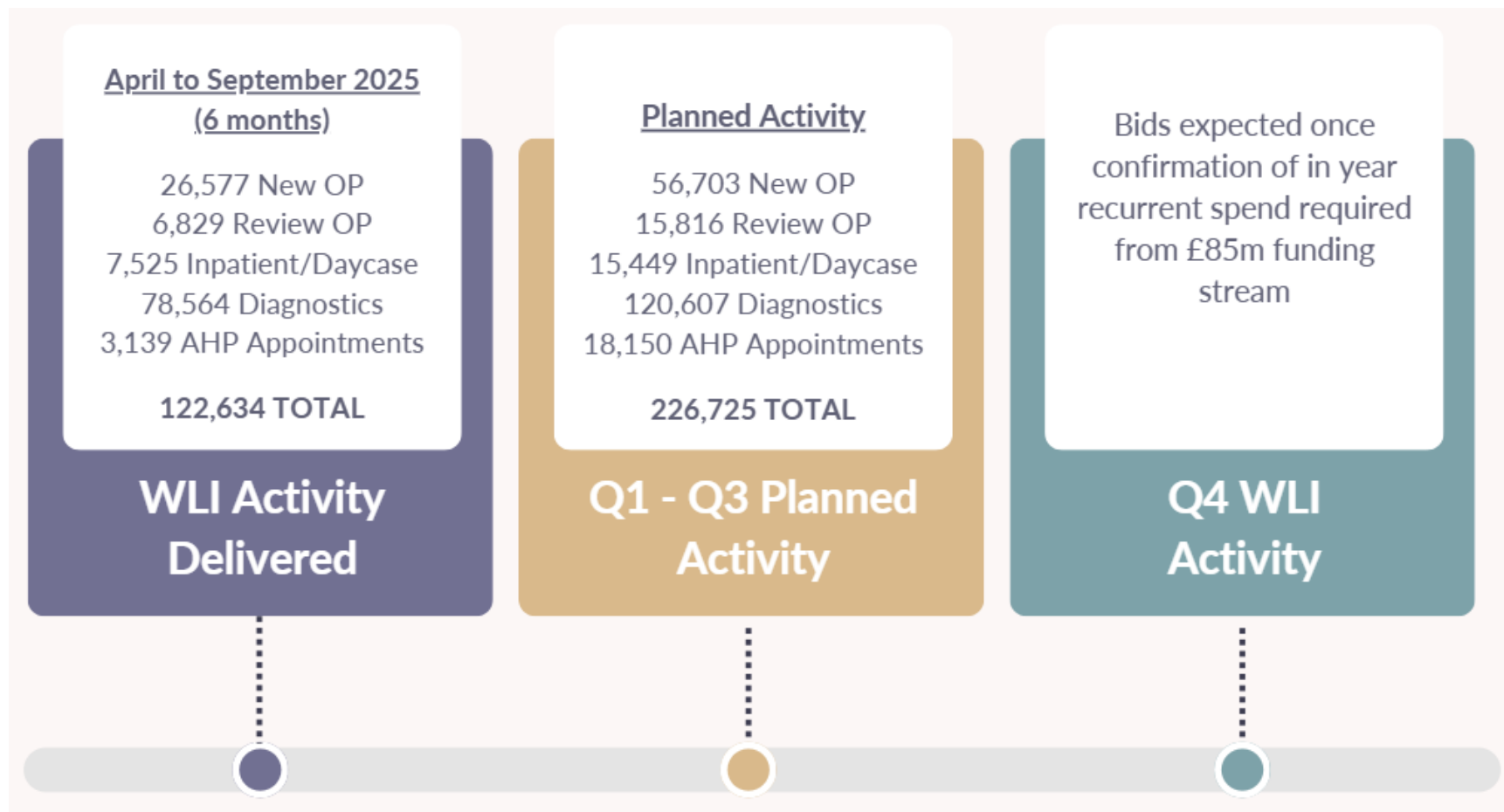
PfG ALLOCATIONS

- **£85m red flag/time critical funding**
From existing DoH baseline
- **£80m routine capacity building**
*From existing DoH baseline**
- **£50m non recurrent allocation to DoH**

**73.5m contribution to DoH in year deficit*

£85M RED FLAG/TIME CRITICAL
FUNDING

RED FLAG/TIME CRITICAL WLI

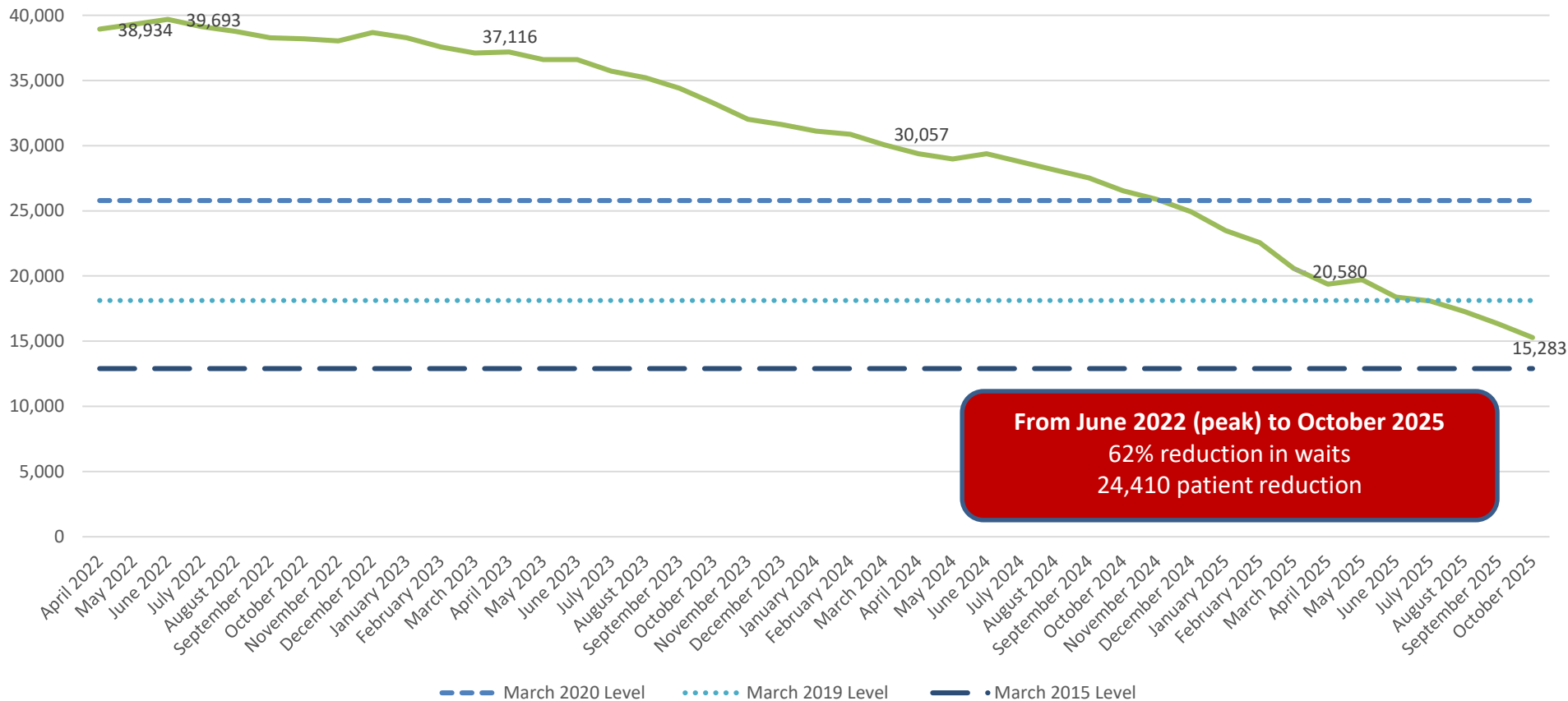


Total Delivery to end of September 2025 – 122,634



ENDOSCOPY WAITS

The graph below indicates the number of patients awaiting endoscopy (including all urgency types) at the end of each month, shown as a trend from April 2022



From June 2022 (peak) to October 2025
62% reduction in waits
24,410 patient reduction



CT REGIONAL WAITS

<i>CT Wait Backstops</i>		
	<i>April 2025</i>	<i>November 2025</i>
<i>Priority 1 Planned</i>	<i>4 weeks</i>	<i>2 weeks</i>
<i>Priority 2 Urgent</i>	<i>4 weeks</i>	<i>4 weeks</i>
<i>Priority 3 Routine</i>	<i>52 weeks</i>	<i>13 weeks</i>
<i>Red Flags</i>	<i>managed in house, little material backlog</i>	

MRI REGIONAL WAITS

	Regional Wait Numbers		% Change
	27/03/2025	06/11/2025	
RFs > 2 weeks	559	306	- 45%
Planned > due date	1,019	795	- 22%
Urgent > 4weeks	495	273	- 45%
Routine > 9 weeks	2,383	1,027	- 57%

	Regional Wait Numbers		% Change
	27/03/2025	06/11/2025	
RFs > 2 weeks	382	349	-9%
Planned > due date	989	462	-53%
Urgent > 4weeks	4,594	6,195	+34%
Routine > 9 weeks	16,890	15,694	-7%

Date Source: SPPG regional imaging dashboard

£80M ROUTINE CAPACITY BUILDING
FUNDING

£6.5M COMMITMENT



CAPACITY BUILDING PLAN

Area	2025/26 Spend	2026/27 Spend	2027/28 Spend
GP Federations	£2.9m	£2.9m	£2.9m
Phlebotomy Hub	£0.5m	£1.0m	£1.0m
POA Expansion	£0.7m	£3.0m	£3.0m
Training Places*	£0.7m	£2.1m	£4.2m
Third Sector	£1.5m	£1.5m	£1.5m
Total	£6.3m	£10.5m	£12.6m

6,834 appointments delivered April to October 2025 by GP PCES

**This assumes 7 places offered in year 1, 28 places offered in year 2 and 25 places offered in year 3. There will be an incremental increase in cost over the 7 year training period. [ECF commitment was 25 by March 2027]*

At the end of the 7 year period funding will need to be provided to create the consultant posts for the new trainees – this has been earmarked in recurrent commitment profile

£50M

NAMED PROCEDURES

LONG WAITERS

WAITING LIST REIMBURSEMENT SCHEME



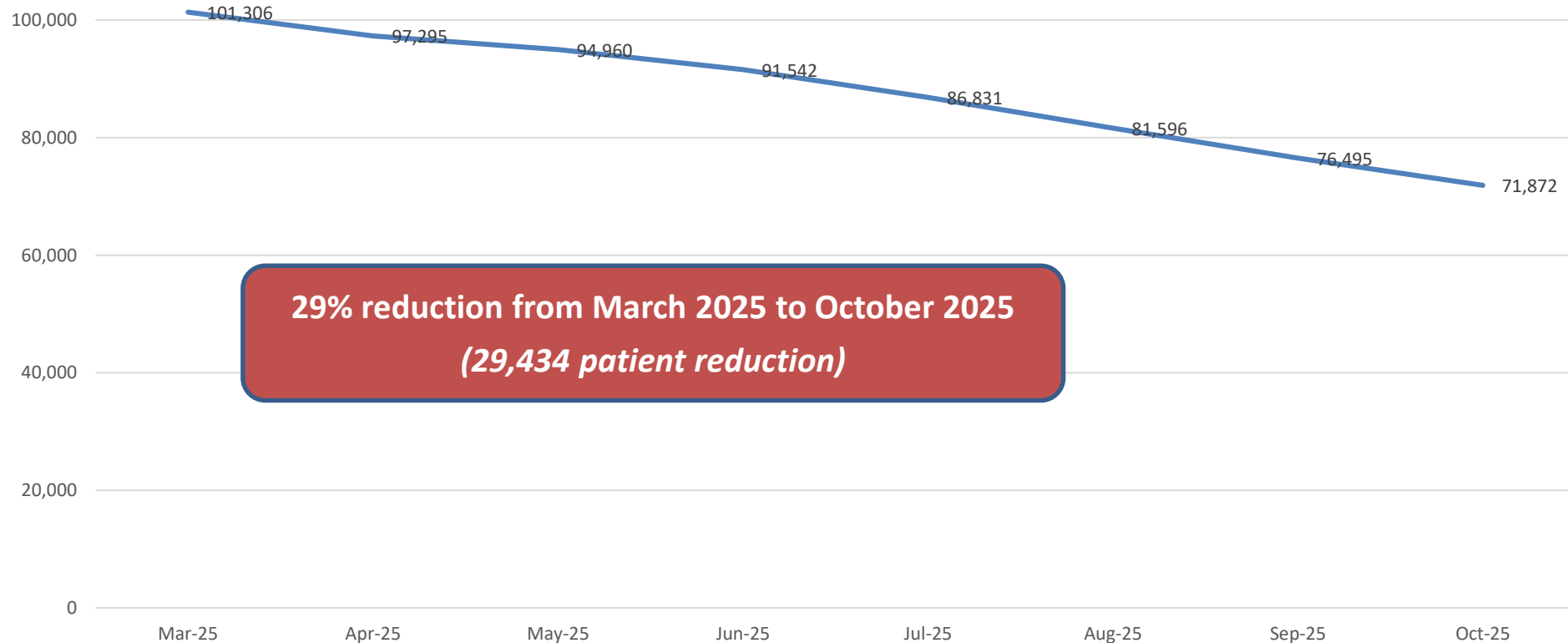
NAMED PROCEDURES

The graph below shows the reduction in the number of patients within the named procedure categories projected to be waiting over the target waiting times by March 2026, comparing March 2025 with October 2025

PROCEDURE	TARGET	Mar-25	Oct-25	VARIANCE	% VARIANCE
Colonoscopy	CLEAR WAITS OVER 4 YEARS	645	49	-596	-92%
Hernia		844	489	-355	-42%
Lap Chole		1,411	685	-726	-51%
Primary Hip		431	245	-186	-43%
Primary Knee		977	533	-444	-45%
Tonsillectomy		470	191	-279	-59%
Paediatric Scope	CLEAR WAITS OVER 1 YEAR	434	166	-268	-62%
Gynae Mesh	CLEAR WAITS OVER 6 MONTHS	64	55	-9	-14%
Cleft Lip	CLEAR WAITS OVER 13 WEEKS	31	55	24	77%
Paediatric Squints		42	35	-7	-17%
Peg Tube		3	5	2	67%
Scoliosis		78	81	3	4%
GRAND TOTAL		5,430	2,589	-2,841	-52%

OUTPATIENTS (OP)

The graph below shows the reduction in the number of OP's projected to be waiting over four years by March 2026, broken down by month end from the March 2025 baseline

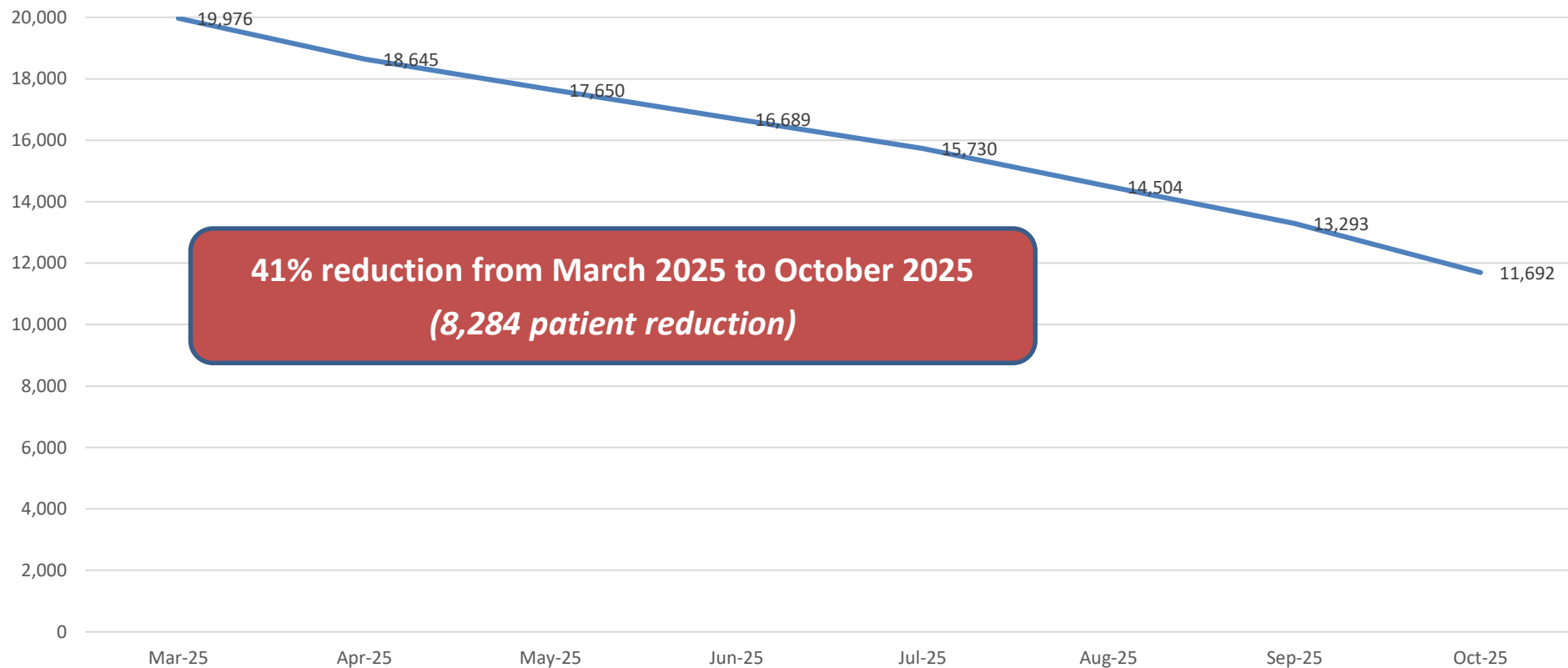


29% reduction from March 2025 to October 2025
(29,434 patient reduction)



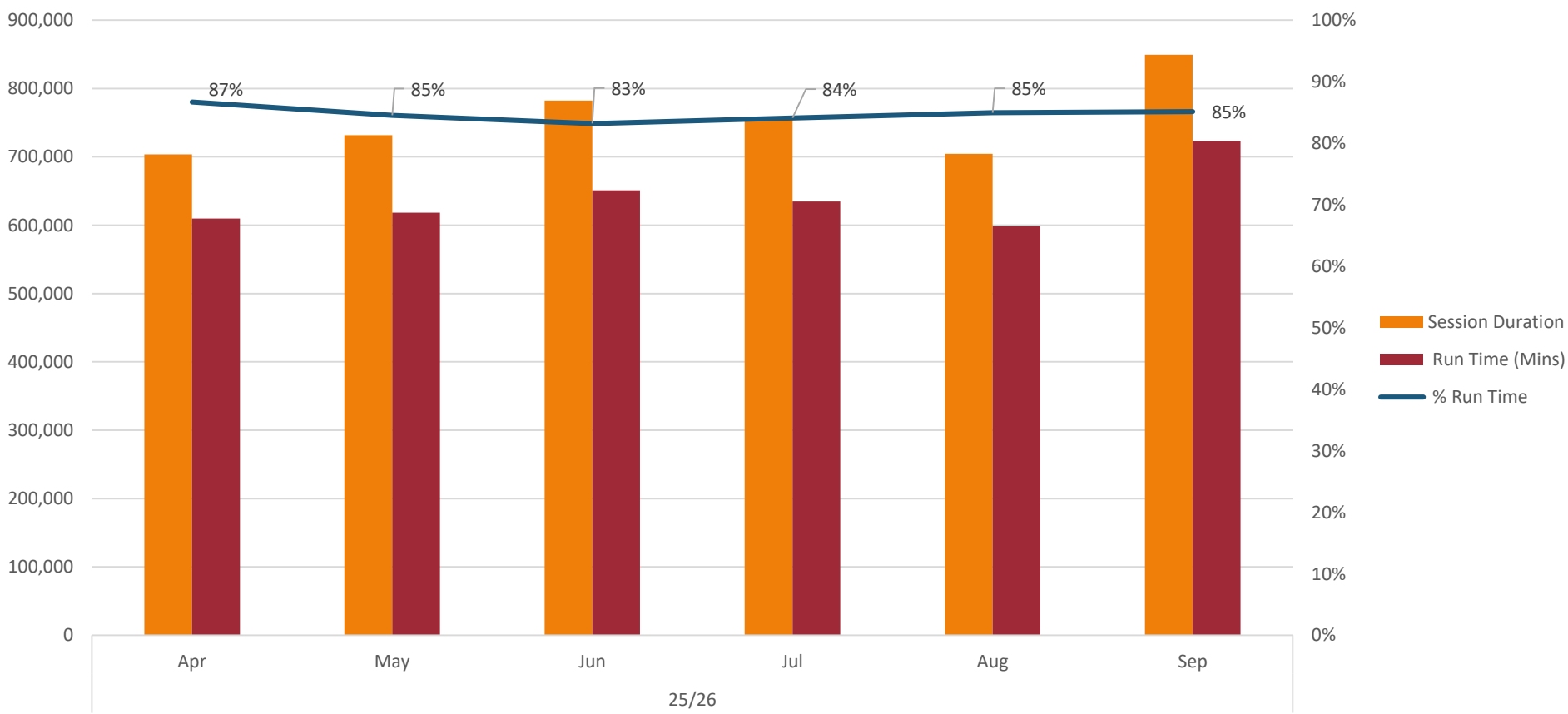
INPATIENT/DAYCASE (IPDC)

The graph below shows the reduction in the number of IPDC's projected to be waiting over four years by March 2026, broken down by month end from the March 2025 baseline



THEATRE UTILISATION

The graph below shows the regional theatre utilisation rates year to date for 2025/26, across all theatres



25/26

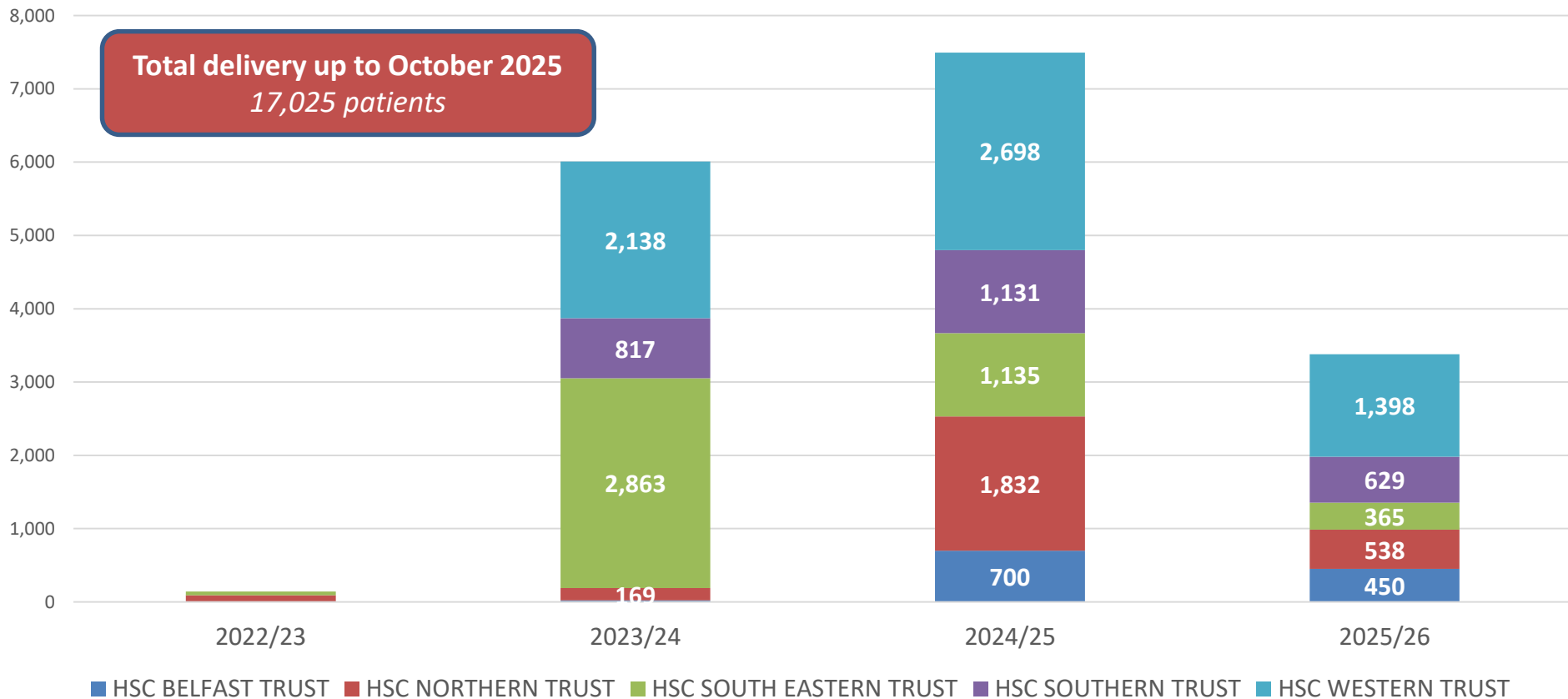
Strategic Planning and Performance Group

NB: Data from May onwards is subject to validation for Southern and Western Trusts due to recent Epic 'go-live'

Data Source
Management data sourced from Epic

ENDOSCOPY DPC ACTIVITY

The graph below indicates the patients scoped at Lagan Valley and Omagh since regional capacity commenced, shown by the 'transferring Trust'

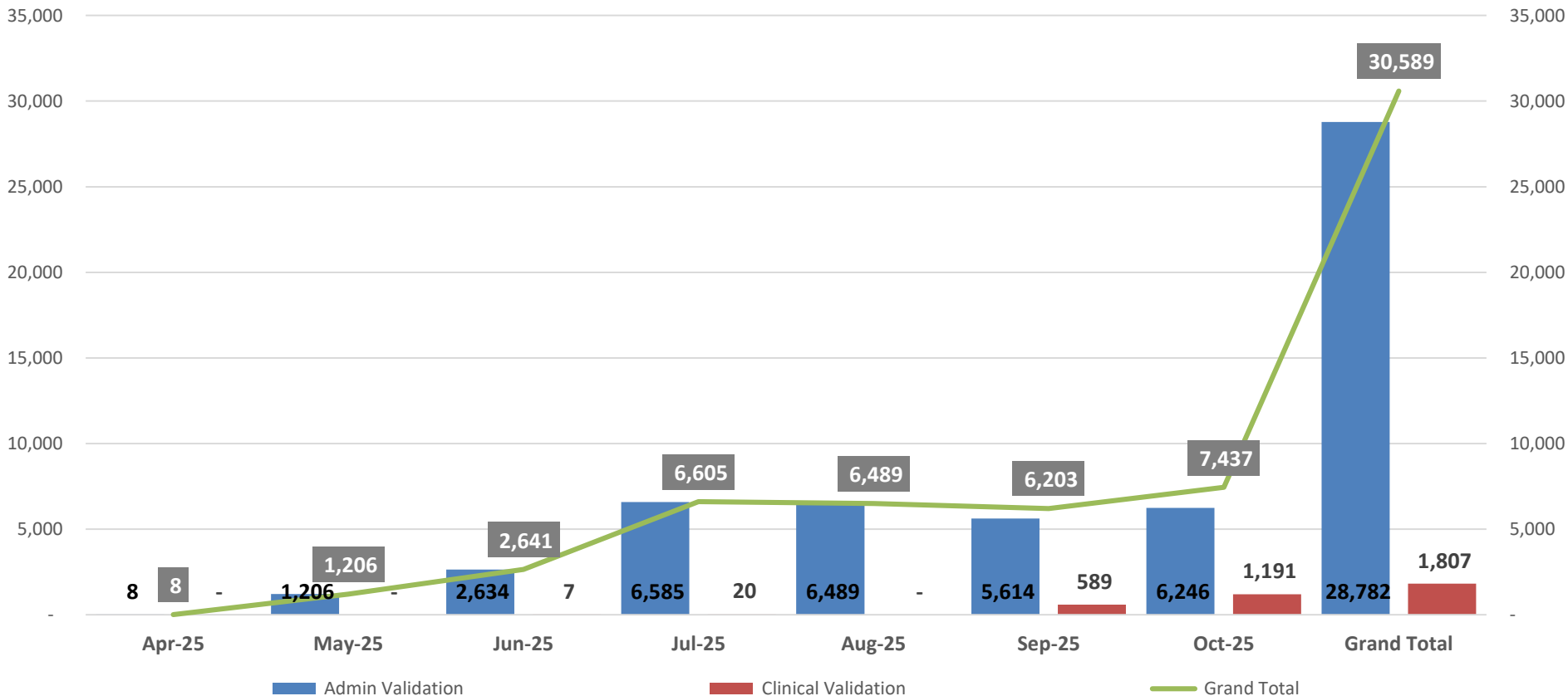




OUTPATIENT VALIDATION

This graph shows the total number of OP Admin & Clinical Validation completed between for Apr-Oct 25 YTD, broken down by month end from April 2025.

OP Admin & Clinical Validation: (Excludes Duplicate Validation Removals)



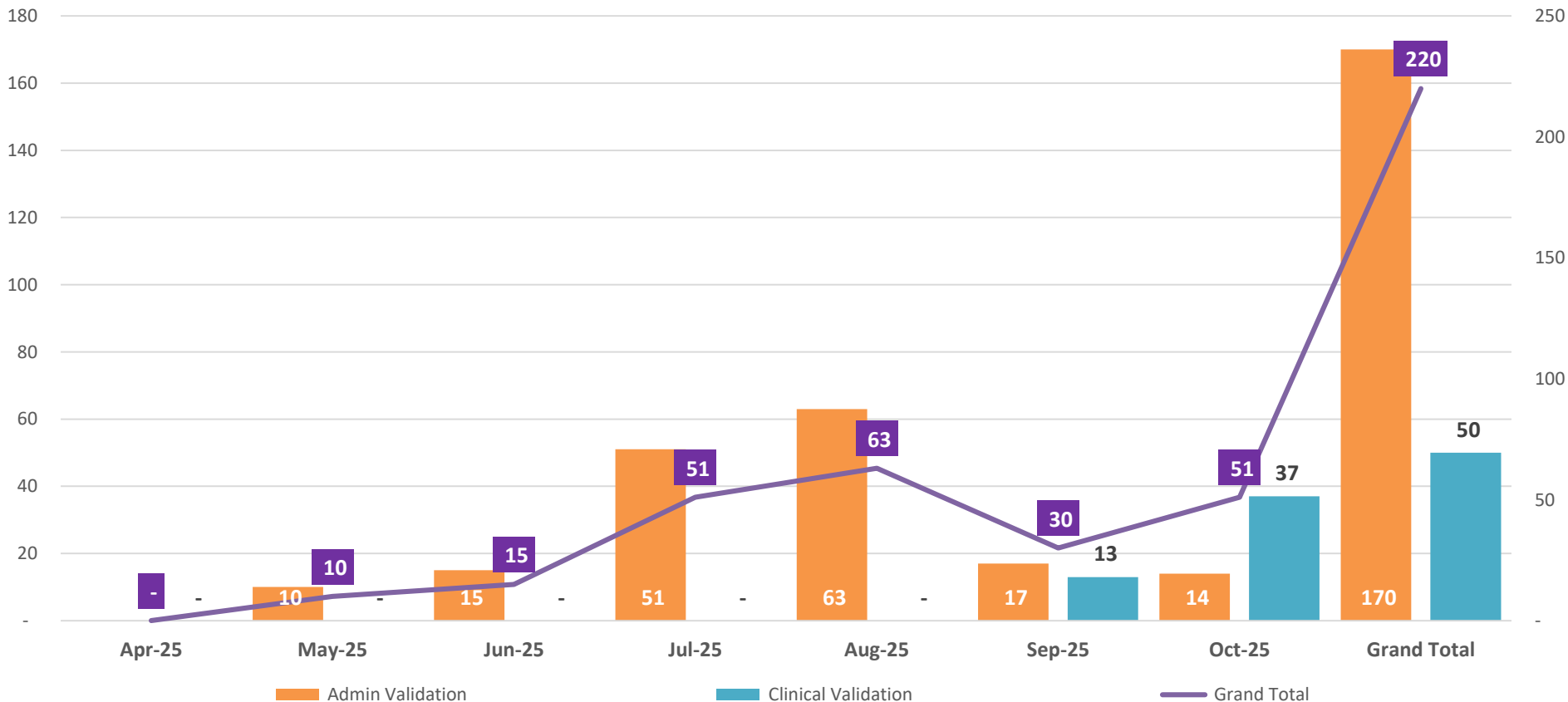
NB: Data from May onwards is subject to validation for Southern and Western Trusts due to recent Epic 'go-live' Clinical Validation Codes only available on Epic from September 2025



INPATIENT/DAYCASE VALIDATION

This graph shows the total number of IPDC Admin & Clinical Validation completed between for Apr-Oct 25 YTD, broken down by month end from April 2025.

IPDC Admin & Clinical Validation: (Excludes Duplicate Validation Removals)



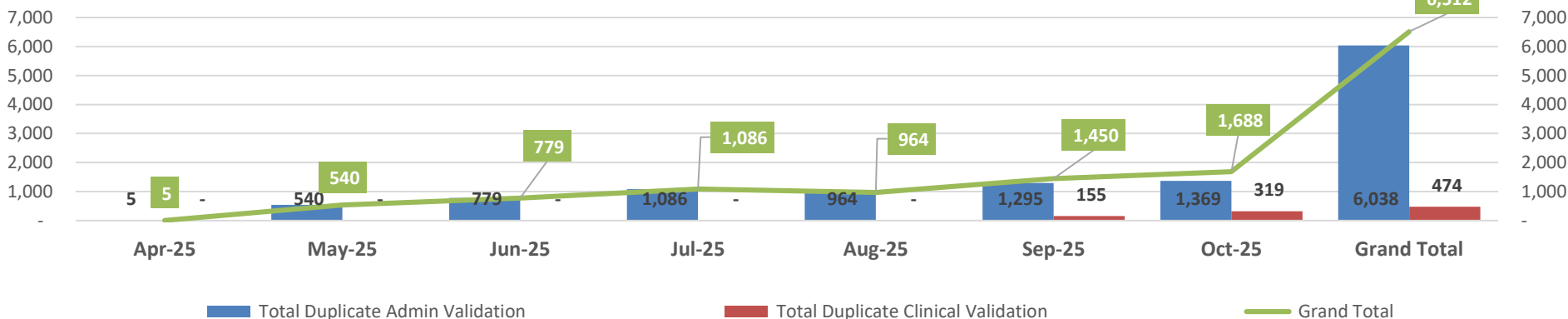
NB: Data from May onwards is subject to validation for Southern and Western Trusts due to recent Epic 'go-live' Clinical Validation Codes only available on Epic from September 2025



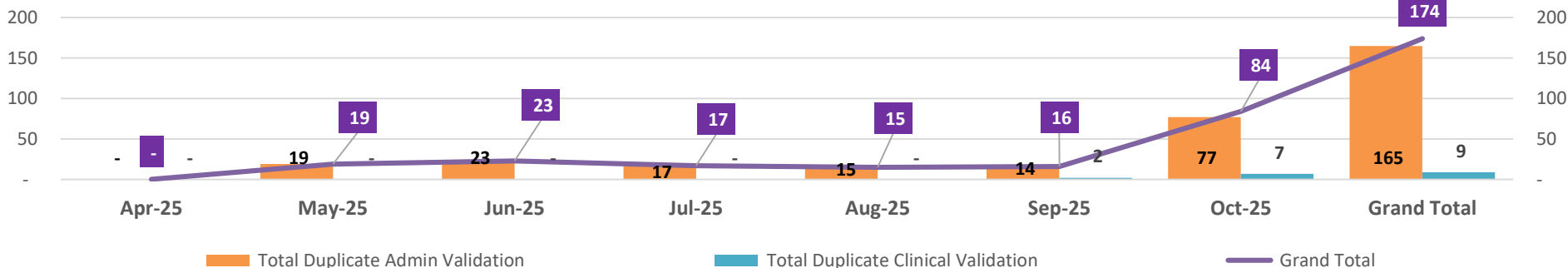
DUPLICATES

This graph shows the total number of OP & IPDC Duplicates removed following Admin & Clinical Validation completed between for Apr-Oct 25 YTD, broken down by month end from April 2025.

OP Duplicates Removals following Validation: (Total Admin & Clinical Validation inc Same & Other Trust Data)



IPDC Duplicates Removals following Validation (Total Admin & Clinical Validation includes Same and Other Trust Data)



NB: Data from May onwards is subject to validation for Southern and Western Trusts due to recent Epic 'go-live'