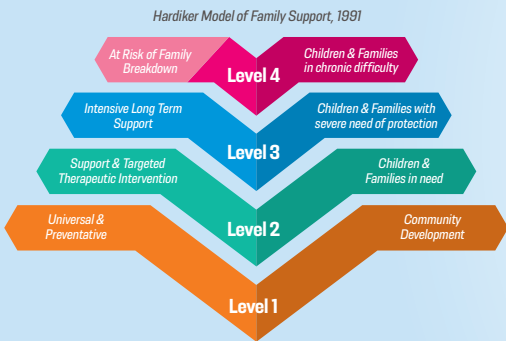


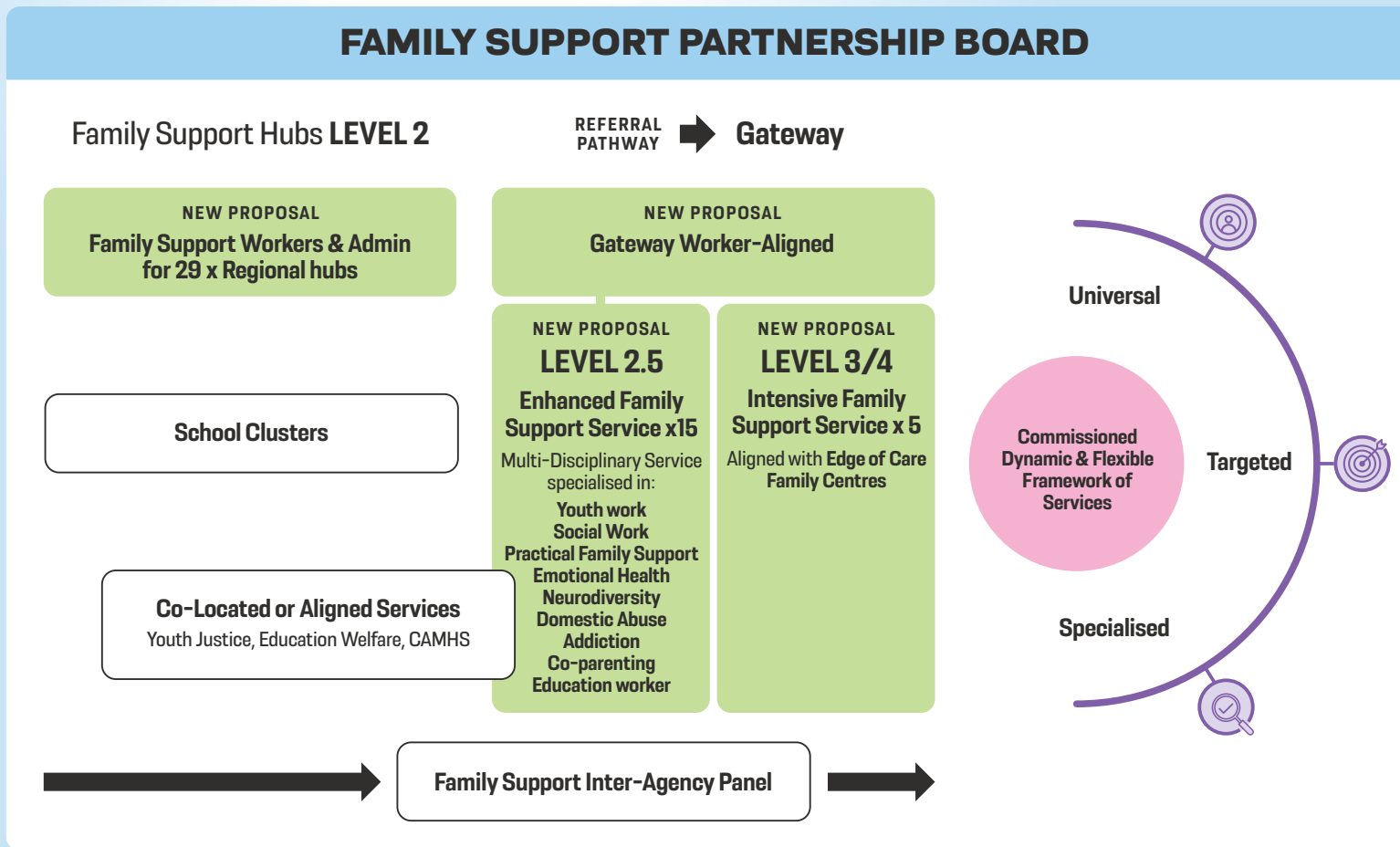
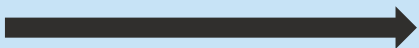
# TOGETHER FOR FAMILIES

A Relational, Tiered, Neighbourhood-based, Whole-System Family Support Service



Existing Services **LEVEL 1** ➔

- Community-based supports
- Ante-natal Care
- Health Visiting
- Sure Start
- Early Years
- Education
- Primary Care MDTs



## Underpinning Principles

