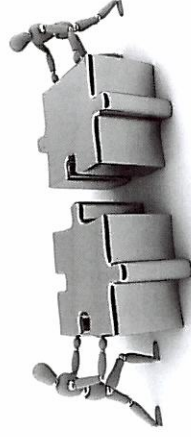


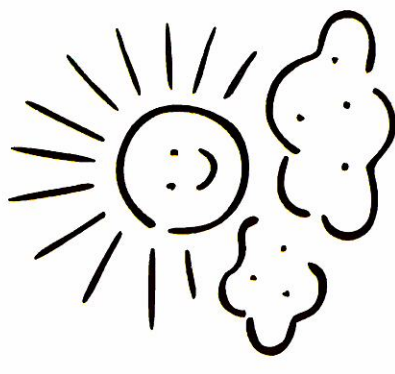
## Mental Health issues

The Therapeutic LAC Nurse is member of the SET Connects team. She does an initial mental health screen at the point of entry into residential care for all young people, offers support to the carers, and to the young person individually where appropriate. She works to aid transition of looked after children from Beechcroft (child and adolescent mental health inpatient unit) back into their placement. She also works with staff and foster carers to increase understanding of mental health issues.

SET Connects,  
Hilden Resource Centre  
1B Glenmore Park  
Lisburn  
Co. Antrim  
BT27 4RT  
  
Tel: (028) 9266 7990



**SET CONNECTS**



**A Therapeutic Support  
and Consultation Service  
for Looked After and  
Adopted Children**

SET Connects is a therapeutic support service for Looked After and Adopted children and the network that surrounds them.

We offer consultation, training and therapeutic guidance to adoptive parents, foster carers, kinship carers, field social workers, supervising social workers and residential staff.

We provide support either indirectly by co-working with individuals with important connections to the young person, or offer direct therapeutic intervention, individually or alongside key attachment figures.

We accept a referral where there are concerns about social, emotional and/or behavioral difficulties, which are placing a strain on the family/placement.

We also provide a range of supports to the social work system for example reflective practice, training and attendance at key Trust panels to support care planning. We accept referrals from **Field Social Workers only** for looked after children & young people up to the age of 18 years (see referral criteria).

The service covers all sectors of South Eastern HSC Trust and we have bases in:

- Hilden Resource Centre, Lisburn
- Newtownards Hospital
- Bernagh House, Downshire Hospital.

## How to refer to our service

- Electronic referral form should be used
- We will accept referrals in relation to children up to the age of 18 years from Field Social Workers within the Safeguarding/Cared for Children's Programmes
- All referrals must also have prior approval from the relevant Team Leader
- Looked after Children must currently be under a Care Order or accommodated by the South Eastern Trust
- Kinship placements must be approved and have a link social worker attached
- It is important that the carers involved are available to take part and work through the advice given through the consultation process
- It is also essential that some steps have already been taken to alleviate the issues of concern, for example, support to foster carers, life story work with the young person, etc.

We accept referrals for post adoption support through the **Adoption Social Work Team only** following an initial assessment carried out by this team and then presented to a **referral panel**.

Referrals should be sent to the Senior Social Worker in the Adoption Team based in Bangor Hospital.

## Consent

It is important that parents are aware of the services being provided to support their children. Written consent from whoever holds parental responsibility will be required, before a child/young person is seen directly. Consent for young people living in Residential care is gained at admission. If there are any difficulties in meeting this requirement, then contact SET Connects directly in order to discuss this further. It must be pointed out that not all children/young people will directly see a member of the team for therapeutic work.