

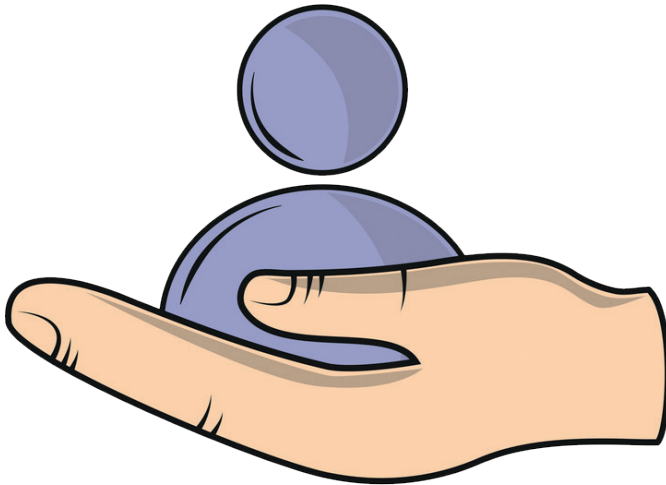


South Eastern Health
and Social Care Trust



Carer Support

Reaching out to carers



The Service is a central point of contact for Carers who care for someone living in the South Eastern HSC Trust area.

Who is a carer?

A Carer is anyone who provides or intends to provide a substantial amount of care to a family member or friend who has a disability or illness or who is frail.



What does the Carer Support Service do?

- Provides information and advice to Carers
- Signposts and refers Carers to relevant agencies and teams for on-going support
- Provides a listening ear service for Carers
- Manages a Trust Carer Register. A Carer can consent to their details being held on the Trust register and mailing list. They will receive a Carer ID Card
- Carers on the mailing list will receive regular information about Carer supports in their own area
- Facilitates monthly Carer Hubs/support groups in local Trust areas
- Organises events for Carers that range from information sessions to social events and wellbeing activities. All events are free of charge and open to any Carer who cares for someone living in the South Eastern HSC Trust area.

If you would like a Carer Information Booklet, to register as a Carer with the Trust or would like information and advice relating to your caring role, please contact the service.



carer.support@setrust.hscni.net



(028) 4372 1807
07900 936 726 Text Service



<https://setrust.hscni.net/service/carers-support-service/>



Ballynahinch Community Services
45-47 Main Street
BT24 8DN